

Lakeview Business Park

To West Salem School District

Neshonoc Rd.

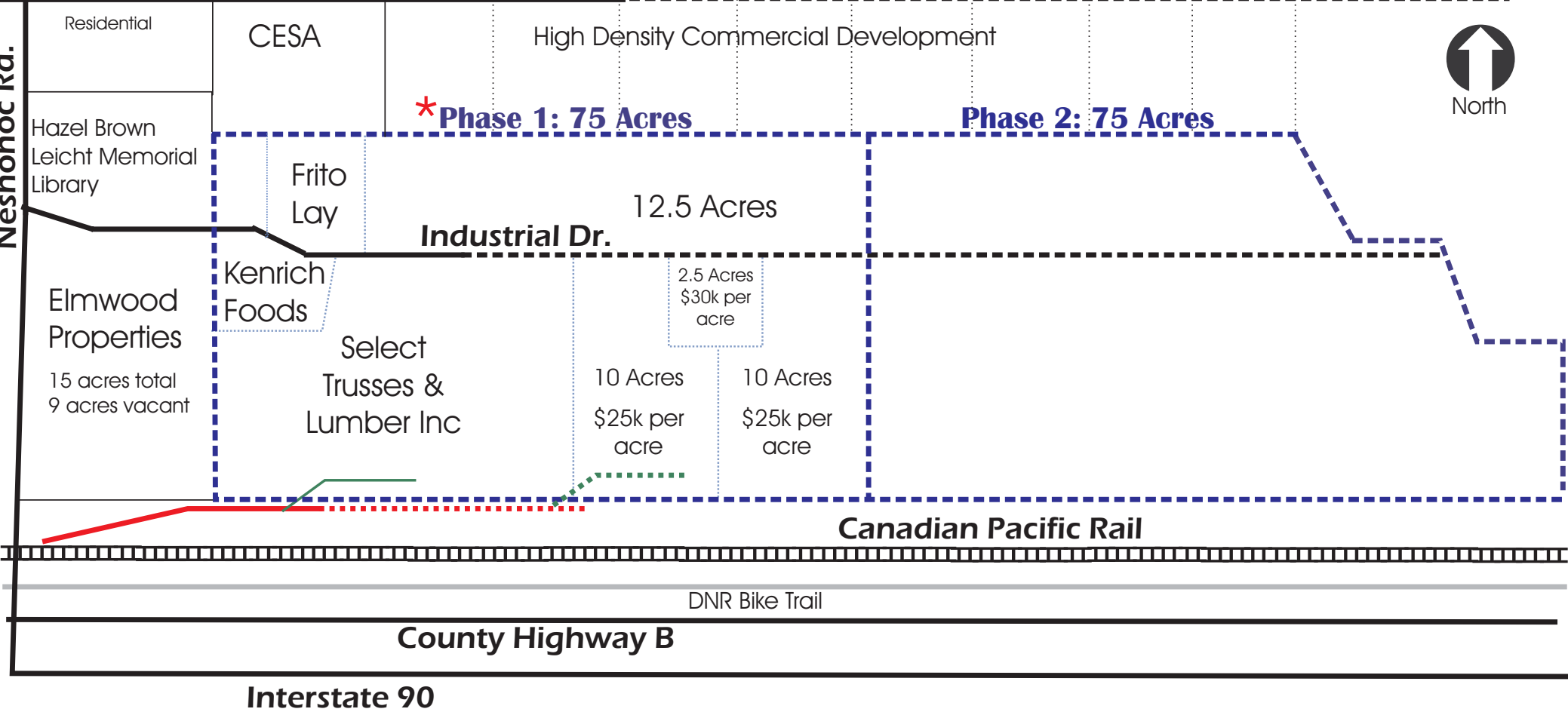
Key:

- - - - - Business Park Boundaries
- Existing Road
- - - - - Extension of Road
- ⋯⋯⋯ Parcel Boundaries
- Existing Rail Lead
- ⋯⋯⋯ Extension of Rail Lead
- Existing Rail Spur
- ⋯⋯⋯ Proposed Rail Spur

Cost Structure:

- * - \$35k per acre up to 2 acres
- \$30k per acre for 2 - 2.9 acres
- \$25k per acre for 3 or more acres
- \$40k one time hook-up fee for rail
- Per car rail fee

Garland Street



*** Phase 1: 75 Acres**

Phase 2: 75 Acres

Industrial Dr.

Canadian Pacific Rail

DNR Bike Trail

County Highway B

Interstate 90

Residential

CESA

High Density Commercial Development

Hazel Brown Leicht Memorial Library

Frito Lay

12.5 Acres

Kenrich Foods

2.5 Acres
\$30k per acre

Elmwood Properties
15 acres total
9 acres vacant

Select Trusses & Lumber Inc

10 Acres
\$25k per acre

10 Acres
\$25k per acre