

**DISCLAIMER OF LIABILITY**

Neither the County of La Crosse, Department of Zoning & Land Information nor any of its employees shall be held liable for any improper or incorrect use of the information disclosed and/or contained herein and assumes no responsibility for anyone's use of the information. In no event shall the County, Department or its employees be liable for any direct, indirect, incidental, special, exemplary, or consequential damages (including, but not limited to, procurement or substitute goods or services; loss of use, data, or profits; or business interruption) however caused and on any theory of liability, whether in contract, strict liability, or tort (including negligence or otherwise) arising in any way out of the use of this data, even if advised of the possibility of such damage. This disclaimer of liability applies to any damages or injury, including but not limited to those caused by any failure of performance, error, omission, interruption, deletion, defect, delay in operation or transmission, computer virus, communication line failure, theft or destruction or unauthorized access to, alteration of, or use of record, whether for breach of contract, tortious behavior, negligence or under any other cause of action.

**DISCLAIMER OF WARRANTIES AND ACCURACY OF DATA**

Although the data found or produced by this Department or its employees has been produced or processed from sources believed to be reliable, no warranty, expressed or implied, is made regarding accuracy, adequacy, completeness, legality, reliability or usefulness of any information. This disclaimer applies to both isolated and aggregate uses of the information. The Zoning & Land Information Department provides this information on an "as is" basis. All warranties of any kind, express or implied, including but not limited to the implied warranties of merchantability, fitness for a particular purpose, freedom from contamination by computer viruses and non-infringement of proprietary rights are disclaimed. Changes may be periodically made to the information herein; these changes may or may not be incorporated in any new version of the publication. If you have obtained information from the Zoning & Land Information Department or from a source other than this Department, be aware that electronic data can be altered subsequent to original distribution. Data can also quickly become out-of-date. It is recommended that careful attention be paid to the contents of any data associated with a file, and that the originator of the data or information be contacted with any questions regarding appropriate use.

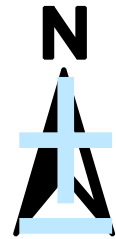
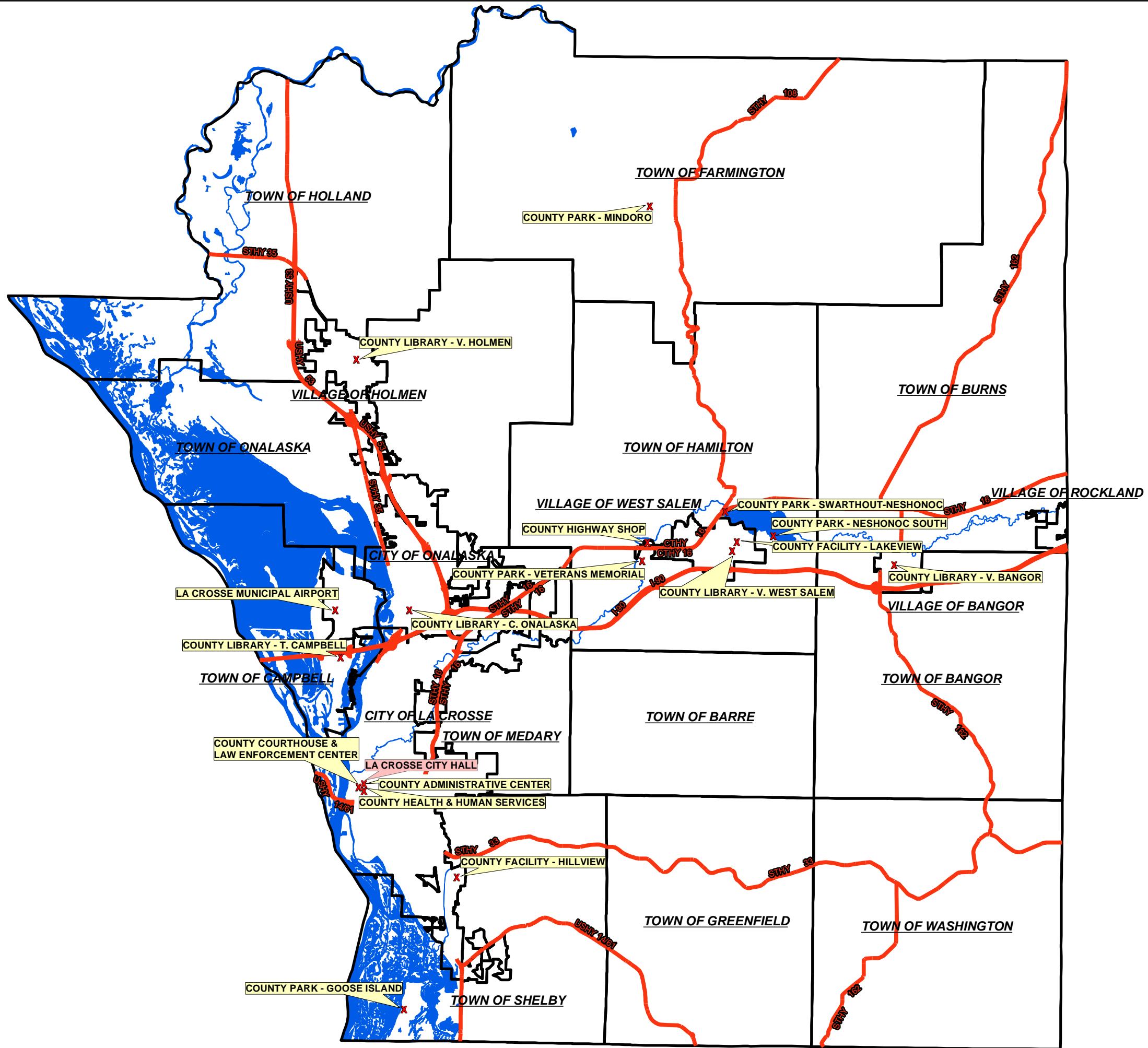
**DISCLAIMER OF ENDORSEMENT**

This Department is a distributor of content sometimes supplied by third parties and users. Any opinions, advice, statements, services, offers, or other information or content expressed or made available by third parties, including information providers, users, or others, are those of the respective author(s) or distributor(s) and do not necessarily state or reflect those of the Department and shall not be used for advertising or product endorsement purposes. Reference herein to any specific commercial products, process, or service by trade name, trademark, manufacturer, or otherwise, does not constitute or imply its endorsement, recommendation, or favoring by the Zoning & Land Information Department.




**CHOICE OF LAW**

Construction of the disclaimers above and resolution of disputes thereof are governed by the laws of the State of Wisconsin. The laws of the State of Wisconsin, U.S.A., shall apply to all uses of this data and this system. By use of this system and any data contained therein, the user agrees that use shall conform to all applicable laws and regulations and user shall not violate the rights of any third parties.

CREATED MAY 9, 2007 BY RONALD A. ROTH  
ZONING, PLANNING & LAND INFORMATION DEPT.  
400 4th STREET N. RM 3170  
LA CROSSE, WI, 54601  
608-785-9722



**Legend**

-  Federal & State Roads
-  Municipalities
-  Rivers & Lakes